

# Tabouret Slim H65 M

design Paolo Vernier, 2017

Slim tabouret avec structure à 4 pieds en acier laqué. La version en acier laqué peut être utilisée à l'extérieur.



## Couleurs et matériaux

### Structure



Acier blanc



Acier noir



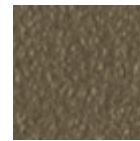
Acier corde



Acier marron



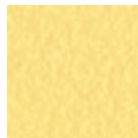
Acier graphite



Acier Fango



Acier Bronze



Acciaio Jaune Pastel



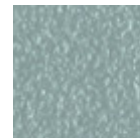
Acier Ocre



Acciaio rosso



Acier Vert Saugé



Acier Bleu Ciel



Acier Bleu Ocean

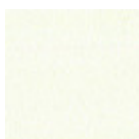


Acier Rose Poudre



Acier Gris Claire

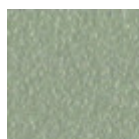
### Revêtement



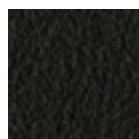
Acier blanc



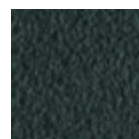
Acier noir



Acier corde



Acier marron



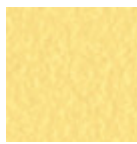
Acier graphite



Acier Fango



Acier Bronze



Acciaio Jaune Pastel



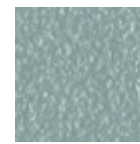
Acier Ocre



Acciaio rosso



Acier Vert Sauge



Acier Bleu Ciel



Acier Bleu Ocean



Acier Rose Poudre



Acier Gris Claire

---

## Dimensions

Dimensions

---

## Données volumétriques

**Poids** 8.5 Kg

**Volume** 0.25 mc

**Colis** 1

Image not found or type unknown

	cm	inch
<b>A</b>	96	37.8
<b>B</b>	53	20.9
<b>C</b>	52	20.5
<b>S</b>	66	26

---

## Téléchargements

**3D Slim H65 (zip)** - <https://www.midj.com/images/uploads/resources/slim-h65-in-out-3d.zip>