



© COPYRIGHT 2019 MDF ITALIA SRL SOCIETA' UNIPERSONALE

2014-2019

ROCK TABLE

Designed by Jean Marie Massaud

NOVELTIES 2019

The elegant silhouette of the Rock Table table is enriched with new finishes: top in textured bleached oak for the bases in natural cement and top in textured anthracite oak for the bases in anthracite grey cement.

ROCK TABLE

A mixture of natural and industrial materials, that are blended to create a new product with a smooth design. A refined solid object, light and stable, radical as well as sensual.

Rock Table is a collection of tables suited to both home and contract settings, with bases in UHPFRC cement in natural or anthracite. Two types of bases: narrow with 80 and 100cm large tabletops or wide with 120 and 140cm large tabletops. H110 or 73cm for tables with narrow bases, H 73cm (or 71.5 with top in smoked glass) for tables with wide base.

TABLETOP WITH BASES IN NATURAL CEMENT

- MD-wood fibreboard in thickness 25mm with finished edge, in white matt lacquer with a scratch-proof finish (80, 100, 120, 140cm);
- white UHPFRC cement (ultra-high performance fibre-reinforced cement) with cutting-edge technical/structural properties (80, 100, 120, 140cm);
- textured bleached oak, 25 mm thick with processed edge (80, 100, 120, 140 cm).

TABLETOP WITH BASES IN ANTHRACITE GREY CEMENT

- MD-wood fibreboard in thickness 25mm with finished edge, matt grey lacquer with a scratch-proof finish (80, 100, 120, 140cm);
- anthracite UHPFRC cement (ultra-high performance fibre-reinforced cement) with cutting-edge technical/structural properties (80, 100, 120, 140cm);
- smoked tempered glass in thickness 12mm (120, 140cm tabletops);
- textured anthracite oak, 25 mm thick with processed edge (80, 100, 120, 140 cm).

FRAME

The bases are made of UHPFRC (ultra-high performance fibre-reinforced cement) with cutting-edge technical/structural properties.

A fundamental characteristic of the components is mass colouration. The finish and colour of the table bases is the result of a skilled mixture of sand and natural elements. Together with the slow maturation and drying given to each piece, this allows countless subtle shades to be obtained.

OUTDOOR USE

The table with cement top is also suitable for outdoor.

ROCK TABLE



TABLES WITH WIDE BASE

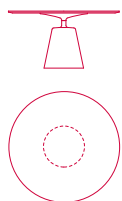


TABLE Ø140 H71.5* and H73 cm
BASE Ø50 H51 cm

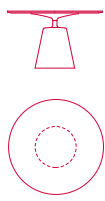


TABLE Ø120 H71.5* and H73 cm
BASE Ø50 H51 cm

*tables with glass top H 71.5 cm

TABLES WITH NARROW BASE

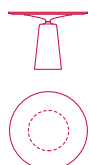


TABLE Ø100 H73 cm
BASE Ø34 H57 cm



TABLE Ø80 H73 cm
BASE Ø34 H57 cm



TABLE Ø80 H110 cm
BASE Ø34 H57 cm

Finishing

The number in the dot corresponds to the number of colour/material finish.

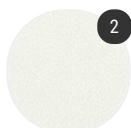
Here below, in the section FINISH OPTIONS, please note all the colours of the materials used for this product.

TABLE

Top



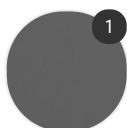
Cement



Matt lacquered



Oak



Glass

Structure



Cement

Finish options

TOP

Cement



Cement white



Cement
anthracite

Matt lacquered



Matt
lacquered
white X042



Matt
lacquered
graphite grey
X082

Oak

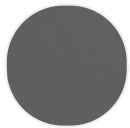


Textured
bleached oak



Textured
anthracite
oak

Glass



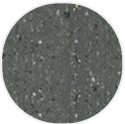
Smoked grey
tempered
glass

STRUCTURE

Cement



Cement
natural X080



Cement
anthracite
X081