

# KETTAL

Object

## Club Armchair

Designer

Kettal Studio

Collection

Kettal Net

Reference

68200/ 942115



## Dimensions

(cm / inch)



| 71 27,9" |



| 71,5 28,1" |

— 84 33"  
— 64 25,13"  
— 40 15,7"

## Standard Finishes

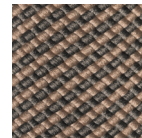
Aluminium



726

Manganese

Bela Rope



453

Honeysuckle

Fabrics



287

Wet Sand Laminate

## Materials

### Rope

Antioxy, Resist U.V, En-581-4, Easy Clean

### Fabric

Heavy Load 100.000 Cycles, Heavy Load Resistant 1000 Decitex, Kettalize-It, Resist U.v, En-581-4, Easy Clean, Abrasion, Resistance 30.000 Cycles, Quickdry

### Aluminium

Antioxy, Heavy Load, Resistant En-1421, Kettalize-It, Anti- Scratch, Easy Clean, Flame Retardant M1, Eco Friendly Ecoembes Recycling Process

### Optional Colours

Fabric, Laminate Fabric

↳ **Stackable**

## Characteristics

### Frame

Units box	2
Box Weight	6,34 Kg / 13,97 Lbs
Box Volume	0,76 m <sup>3</sup> / 26,8 cft.

### Seat / back high cushion

Units box	1
Box Weight	1,5 Kg / 3,3 Lbs
Box Volume	0,51 m <sup>3</sup> / 18 cft.
C.O.M.	2,27 ml