



## RO™

---

Spanish designer Jaime Hayon has designed the wonderful lounge chair called Ro™. The lounge chair gives you space for reflection and a moment to yourself. Ro™ is, however, much more than an lounge chair - it's a 1½-seater where you can relax, change position and have your newspaper, computer or child next to you. It creates a new comfort zone.



REPUBLIC OF **Fritz Hansen**®

## PRODUCT DESCRIPTION

Ro™ is softly sculptured and formed after the curves of the body. With no sharp edges or roughness, it invites you to sit down and relax and reflect. The aesthetics of Ro do not compromise functionality and the functionality does not compromise the aesthetics.

The design of the shell is elegant and simple, pleasing to both the eye and the body, and promises tranquillity in both its visual appearance and comfortable functionality. Furthermore, the form of the shell allows you to choose between taking part in what goes on in the room or relaxing in your own private space.

The shell of the chair is created in hard polyurethane foam with glass fibre re-enforcement of the edges as in the Egg™ and the Swan™. The footstool has a bottom plate made of MDF on which the seat cushion is mounted. The seat cushion for both the chair and the footstool is made of moulded polyurethane foam to achieve the right form and comfort. The back cushion on the chair is made of two slices of soft foam with a lumbar support to increase ergonomomy and comfort. The neck cushion is a construction of form-pressed veneer with a super soft foam. It's mounted with two fittings and it is therefore possible to order and change the entire neck cushion.

The base comes with four legs made of satin brushed aluminium or with a wooden base/legs in oak. Each leg has mounted nylon glides, suitable for most floors.

## DESIGN

Jaime Hayon, 2013.



## JAIME HAYON 1974-

Spanish artist/designer Jaime Hayon was born in Madrid in 1974. As a teenager, he submerged himself in skateboard culture and graffiti art, which formed the detailed, bold yet whimsical imagery so prevalent in his work today.

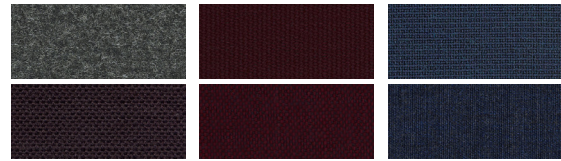
In 1997, after studying industrial design in Madrid and Paris, he joined Fabrica, the Benetton-funded design and communication academy, working closely with the legendary image-maker and agitator Oliverio Toscani.

After a short time he was promoted from student to head of their Design Department. Eight years later, Jaime broke out on his own, first with his collections of designer toys, ceramics and furniture, then followed by interior design and installations.

## UPHOLSTERY

Ro™ is presented in a collection of unique Designer Selections colours with a mix of two fabrics: one fabric for the shell and one fabric for the cushions.

The Designer Selection colours are:



### BLACK

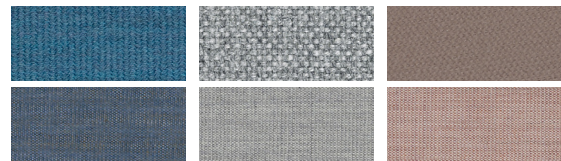
SHELL: DIVINA MELANGE 180  
CUSHIONS: MILANI 71.57/50

### BURGUNDY

SHELL: BALDER 682  
CUSHIONS: SUNNIVA 662

### DARK BLUE

SHELL: FAME 66061  
CUSHIONS: CANVAS 794



### LIGHT BLUE

SHELL: MOOD 4102  
CUSHIONS: CANVAS 734

### LIGHT GREY

SHELL: HALLINGDAL 130  
CUSHIONS: CANVAS 124

### LIGHT GREY

SHELL: STEELCUT 605  
CUSHIONS: CANVAS 614

Ro is also available in the following selection of fabrics and leathers:

**Fritz Hansen Colours:** The Fritz Hansen Colours are created exclusively by Republic of Fritz Hansen's own design team and consist of serene pale pink, warm and earthy terracotta orange and finally deep ocean blue.

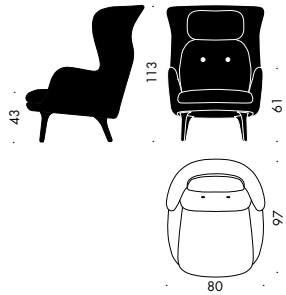
**Fabrics:** Canvas (cushions/footstool only), Capture, Diablo (cushions/footstool only), Fame, Fiord, Divina, Divina Melange, Divina MD, Hallingdal, Remix (cushions/footstool only), Steelcut, Steelcut Trio, Sunniva and Tonus.

**Leathers:** Soft, Elegance, Sense, Rustic and Natural.

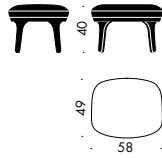


## VARIATIONS & DIMENSIONS

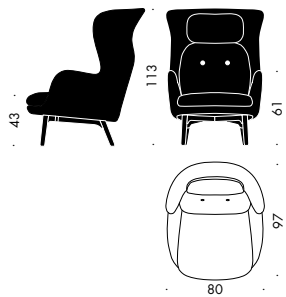
JH1



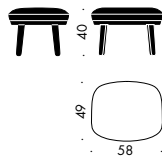
JH11



JH2



JH12



## WARRANTY

A five-year warranty against manufacturing defects in standard products (materials and workmanship). Wear, tear and damage to the product are not covered under this warranty. Claims from end users under the guarantee must be submitted to the vendor from whom the product was purchased. All measurements are indicative.

### STANDARD WARRANTY:

5 years

### MY REPUBLIC EXTENDED WARRANTY:

5 years: Fabric, Wooden base, Cushions, Leather: Soft.

10 years: Brushed aluminium base, Shell, Leather: Natural, Rustic, Elegance, Sense.

To obtain an extended warranty offered through My Republic the products should be registered online. Go to [www.fritzhenzen.com/my-republic](http://www.fritzhenzen.com/my-republic) to register.



## ENVIRONMENTAL PRODUCT INFORMATION

Lounge chair and footstool for meetings, lounges and private use.

### MATERIALS

#### Shell

The shell is made of hard polyurethane (PUR) foam with an embedded steel frame as well as glass fibre re-enforcement of the edges. The shell is additionally enforced with a wooden frame in the seat area. The seat cushion is made of moulded PUR foam and the back cushion is cut from plates of foam. The neck cushion is form-pressed veneer with super soft foam. It is mounted on the shell with two screws and it is possible to remove and change the whole cushion.

#### Base

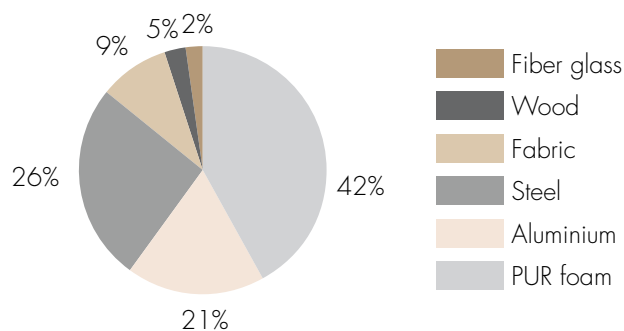
The base is available with brushed aluminium legs or with a wooden base made of oak. The legs are attached to the shell with screws.

#### Upholstery

- Foam is PUR
- Several textiles are available with EU Ecoflower mark
- A water-soluble glue is used for bonding of textile to the foam

#### Materials in %

The below figures illustrate the weight allocation between the different materials used. Items with a weight <1% of the total product weight are not included in the figures below. The upholstery percentage may vary depending on the upholstery type.



### PACKAGING MATERIAL

The lounge chair is covered with a plastic bag and PE foam and shipped and protected in cardboard. All packaging material can be recycled

### REPAIR, DISPOSAL AND REUSE

In the case of disposal the lounge chair can be disassembled into different parts (shell, loose cushions and legs) for recycling, special handling and repair. The shell requires special handling because of the embedded veneer and steel frame. The foam in the loose cushions can be granulated and re-used. The legs and all other metal parts can be recycled.

## MANUFACTURING PROCESSES

### Suppliers

Suppliers environmental stance is examined as part of Fritz Hansen's Quality and Environmental Management Systems before Fritz Hansen enters into cooperation with a supplier.

### Foam

Remnants from foam production are granulated wherever possible, for recycling as cushion filling.

### Metals

Production scrap (steel and aluminium) is collected for recycling.

### Plastic

Plastic components are identified with a recycling code whenever possible to facilitate the return of the materials to the recycling stream

## MANAGEMENT SYSTEMS

### Environmental Systems

We are aware of our environmental responsibilities. Therefore, in the autumn of 2004 Fritz Hansen obtained the ISO 14001 certification in the environmental management system. The certification is a guarantee to our customers and the authorities that we comply with the requirements of the ISO 14001:2015 standard.

### Quality System

Fritz Hansen is also certified according to the quality system ISO 9001:2015.

### Employee Health and Safety

Fritz Hansen aims at meeting or exceeding OSHA standards.

## ENVIRONMENTAL PRODUCT CERTIFICATION

### GreenGuard

The Ro™ lounge chair is GreenGuard Gold certified. GreenGuard certification is an emission certification for indoor air quality. Products with ultra-low-emitting materials can achieve GreenGuard Gold.

## LONG LIFETIME

A long lifetime of a piece of furniture is an important environmental factor. Fritz Hansen aims to obtain a long lifetime through timeless design and strict requirements for strength, durability and stability. The chair complies with the requirements for EN 16139 L2 Non domestic seating, severe use.

## MORE INFORMATION

Please visit [www.fritzhenzen.com](http://www.fritzhenzen.com) for additional environmental information and to download our Perspective on Sustainability & Corporate Environmental Policy.