

# Chaise Ola S M LG

design Paolo Vernier, 2016

Ola chaise avec structure en acier laqué en coque en bois. Chaise empilable jusqu'à huit pièces.



## Couleurs et matériaux

### Structure



Acier blanc



Acier noir



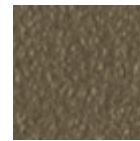
Acier corde



Acier marron



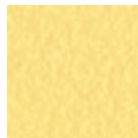
Acier graphite



Acier Fango



Acier Bronze



Acciaio Jaune Pastel



Acier Ocre



Acciaio rosso



Acier Vert Saugé



Acier Bleu Ocean

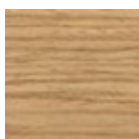


Acier Gris Claire



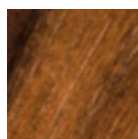
Acier Rose Poudre

### Revêtement



Plaqué laqué

9 Couleurs



Plaqué noyer flammé

## Dimensions

Image not found or type unknown

Dimensions

	cm	inch
A	82	32.3

	cm	inch
<b>B</b>	49	19.3
<b>C</b>	54	21.3
<b>D</b>	45	17.7

---

## Données volumétriques

**Poids** 14 Kg

**Volume** 0.31 mc

**Colis** 1

---

## Téléchargements

**3D Ola S (zip)** - <https://www.midj.com/images/uploads/resources/ola-s-ts-3d.zip>

**Catalogue Ola (pdf)** - [https://www.midj.com/images/uploads/resources/Midj\\_2016\\_catalogo\\_Ola.pdf](https://www.midj.com/images/uploads/resources/Midj_2016_catalogo_Ola.pdf)